

# Driving Investment & Sustainable Growth for Oxfordshire (DISGO)

APRIL 2023 - MARCH 2024

## Summary

- We are the Oxfordshire Local Enterprise Partnership, **OxLEP**.
- Our mission is to inspire and support business, to secure investment and drive opportunities for economic prosperity across our communities.
- **OxLEP's** ability to communicate and engage locally as well as across the County, the UK and internationally is evident through our activities and our impacts.



### DEVELOPED A NEW STRATEGIC ECONOMIC PLAN

which involved an independent economic review, stakeholder engagement, open workshops, and an Action Plan,



Provided over  
**2800**  
hours of expert  
business support

Created the first  
**VISITOR ECONOMY  
DESTINATION  
MANAGEMENT PLAN**  
for Oxfordshire



**£441.7m**

Supported and monitored the  
30 completed **Local Growth Fund**  
and 6 **Getting Building Fund**  
projects which overall have invested  
£441.7m in Oxfordshire

Delivered 'probably' the  
widest range of support  
for businesses, available  
anywhere in England



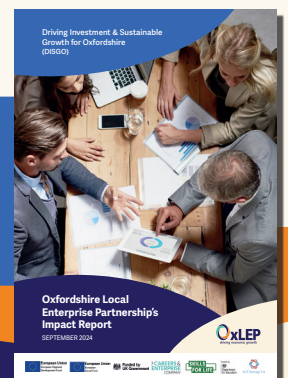
**Ukrainian Nationals**  
supported to  
start a business

**429**  
people making progress towards  
the labour market through the  
'No Limits' Programme

**£840,884**

Supported 52 Visitor  
Economy businesses with  
total grants allocated of  
£840,884

DOWNLOAD  
the latest  
Impact Report



**2024/25** is set to be another year of challenge and opportunity with further political and structural change following the Local and National Elections and the change of government. **OxLEP** is in a strong position to support our Businesses and Communities to realise their potential.

Find out more: [www.oxfordshirelep.com](http://www.oxfordshirelep.com)



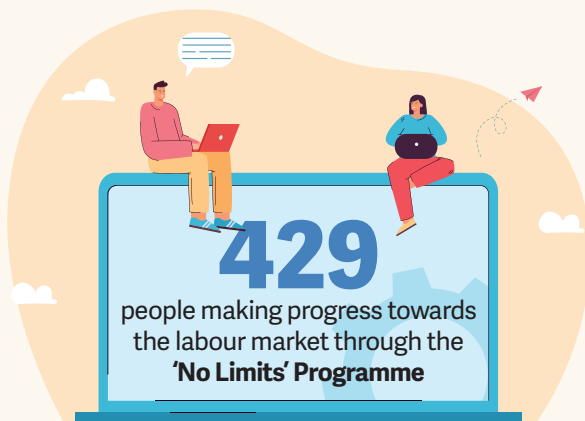
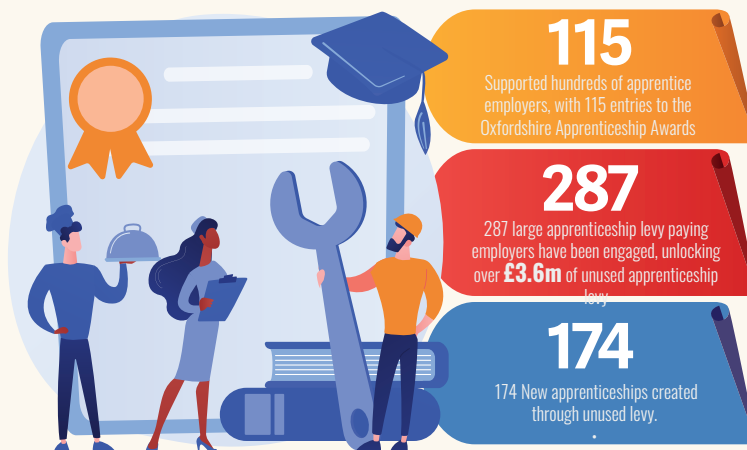
# Driving Investment & Sustainable Growth for Oxfordshire (DISGO)

APRIL 2023 - MARCH 2024

## For People

We are the Oxfordshire Local Enterprise Partnership, **OxLEP**. Our mission is to inspire and support business, to secure investment and drive opportunities for economic prosperity across our communities.

**OxLEP Skills'** focus is ensuring that everyone has the access and support to employment and training through upskilling and re-skilling, while aiming to ensure that the next generation can develop the skills employers need. In 2023/24 we have:



Inspired over 3250 students, including more than 250 from special schools

3250

92%

92% of students felt that CareersFest helped them understand more about the world of work

The Oxfordshire Careers Hub supporting 58 secondary schools and FE colleges

58

307

307 businesses active with careers initiatives across schools/colleges



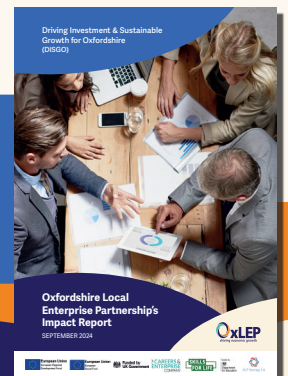
### In 2024/25, OxLEP Skills will be:

- Working with the new government to break down the barriers to opportunity,
- Providing Skills Bootcamps for Oxfordshire adults aged 19+ on 'in-demand' skills,
- Ensure that more people can benefit from support through the extended No Limits programme,
- Navigating the skills landscape for Oxfordshire's businesses.

Find out more: [www.oxlepskills.co.uk](http://www.oxlepskills.co.uk)



DOWNLOAD the latest Impact Report



# Driving Investment & Sustainable Growth for Oxfordshire (DISGO)

APRIL 2023 - MARCH 2024

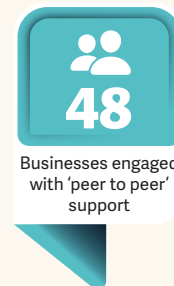
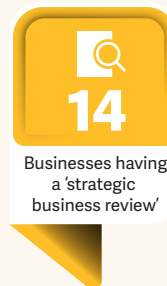
## For Businesses

We are the Oxfordshire Local Enterprise Partnership, **OxLEP**. Our mission is to inspire and support business, to secure investment and drive opportunities for economic prosperity across our communities.

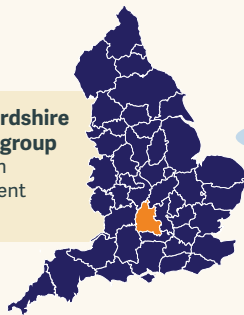
**OxLEP Business** provides businesses with probably the widest range of support available anywhere in England. In 2023/24 we have:



Provided over  
**2800**  
hours of expert  
business support



Coordinated the 'Joint Oxfordshire Business Support' (JOBS) group to increase collaboration with District Economic Development Teams



**750+** businesses

**1444** hours of support

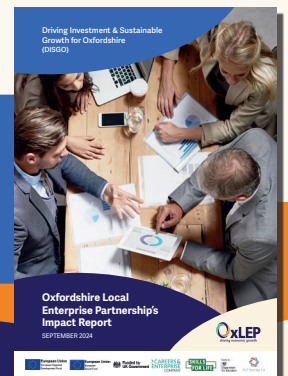
DOWNLOAD  
the latest  
Impact Report



In 2024/25 OxLEP Business will be:

- Continuing to provide a one-stop service for businesses, entrepreneurs, and social-minded enterprises to help them to start, thrive and grow,
- Collaborating with District Councils to deliver enhanced support to their businesses.

Find out more: [www.oxlepbusiness.co.uk](http://www.oxlepbusiness.co.uk)



# Driving Investment & Sustainable Growth for Oxfordshire (DISGO)

APRIL 2023 - MARCH 2024

## For Places & Connectivity

We are the Oxfordshire Local Enterprise Partnership, **OxLEP**. Our mission is to inspire and support business, to secure investment and drive opportunities for economic prosperity across our communities.

Our teams coordinate the creation of Oxfordshire's Strategic Economic Plan and manage the delivery of £multi-million infrastructure and investment programmes that are positively impacting Oxfordshire's People, Businesses, Places and Connectivity, that will deliver impacts for decades to come. In 2023/24 we have:



### DEVELOPED A NEW STRATEGIC ECONOMIC PLAN

which involved an independent economic review, stakeholder engagement, open workshops, and an Action Plan,

Created the first **VISITOR ECONOMY DESTINATION MANAGEMENT PLAN** for Oxfordshire



**£441.7m**

Supported and monitored the 30 completed **Local Growth Fund** and 6 **Getting Building Fund** projects which overall have invested £441.7m in Oxfordshire

**151**

businesses joined 'The Oxfordshire Welcome' scheme



Funded 9 Visitor Economy marketing campaigns engaging over 25 million people, which promoted:

**748**  
Events

**154**  
Visitor Economy Businesses

**50**  
'Made Here' Businesses

**63**  
'Dog Friendly' Businesses



**733+**

**JOBS CREATED**



**689+**

**JOBS SAFEGUARDED**

By 2030, the ambition is that the Local Growth Fund projects will have collectively supported nearly 9500 jobs, helped the development of over 1,800 new homes and enabled at least £695m of funding.

**In 2024/25 OxLEP will be:**

- Refreshing the Strategic Economic Plan based on the new Government's priorities,
- Further developing Oxford Calling to showcase Oxfordshire's incredible strengths,
- Strengthening 'Invest Oxfordshire', OxLEPs inward investment Service to attract further investment

Find out more: [www.oxfordshirelep.com](http://www.oxfordshirelep.com)



DOWNLOAD the latest Impact Report

